

Developable Prestained Protein Marker VIII (13-154 kDa)

Cat. No.	Product Description	Size
PM18-01	ECL Developable Prestained Protein Marker VIII (30-209 kDa)	500 µl
	Dilution buffer	2 ml
PM18-02	ECL Developable Prestained Protein Marker VIII (30-209 kDa)	5x500 µl
	Dilution buffer	10 ml

Description

The ECL Developable Prestained Protein Marker VIII is prestained, visualizable mixture of 7 high-purity recombinant proteins and 3 prestained recombinant proteins. The bands display in Tris-Glycine gel range from 30-209 kDa (~30, ~38, ~50, ~62, ~70, 78, ~105, ~113, ~154, ~209 kDa), of which 70 kDa is the red pre-stained band, 30 kDa and 105 kDa are the blue pre-stained bands to monitor of electrophoresis and transfer efficiency. The seven recombinant proteins (~38, ~50, ~62, ~78, ~113, ~154, ~209 kDa) can bind almost all types of antibodies (except chicken antibodies) and can bind antibodies simultaneously with the target protein and can be visualized by ECL or other means.

Shipping and Storage Conditions

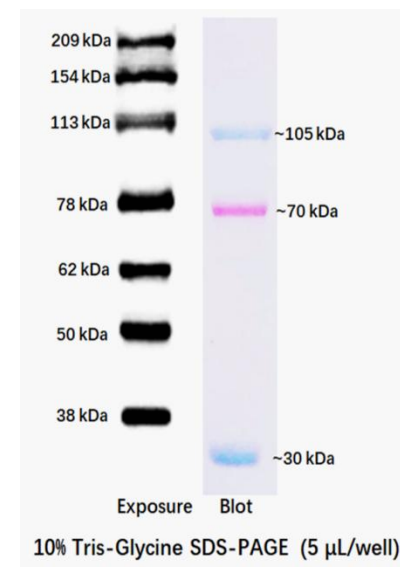
Ship with wet ice; Store at -20°C, valid for 12 months.

Assay Protocol/Procedures

1. This product is ready to use, without adding reducing agent or heating. Thaw the Protein Marker at room temperature and mix it gently and thoroughly.
2. Due to the difference in antibody titer on the market, it is suggested that the laboratory can determine the appropriate dilution ratio through pre-experiment according to its own experimental conditions when using this product for the first time, so as to save costs and obtain better experimental pictures.
 - a. For murine primary antibody, it is recommended to use 5 µl of this product.
 - b. For rabbit primary antibody, it is recommended to use 1 µl of the marker and dilute by 4 times with the provided Dilution Buffer (1 µl protein marker + 3 µl dilution buffer).
 - c. The Protein Marker is stored at -20 °C after use.

Note

1. Do not boil the protein marker, which can lead to degradation or decolorization of protein bands.
2. Extend the transfer time or increase the transfer voltage for Western blot of large molecular weight proteins.
3. For your safety and health, please wear safety glasses, gloves, or protective clothing.



Note. The apparent molecular weight of each protein (kDa) has been determined by calibration against an unstained protein ladder in each electrophoresis condition.

All products are for research use only. Caution: Not intended for human or animal diagnostic or therapeutic uses.



Bioland Scientific LLC Tel: (562)602-8882 Fax: (562)733-6008

Email: service@bioland-sci.com Online: www.bioland-sci.com