

## Dual-Color Prestained Protein Marker V (55-320 kDa)

Cat. No.	Product Description	Size
PM15-01	Dual-Color Prestained Protein Marker V (55-320 kDa)	500 µl
PM15-02	Dual-Color Prestained Protein Marker V (55-320 kDa)	5x500 µl

### Description

The Bi-color Prestained Protein Marker V consists of 8 high-purity and prestained recombinant proteins (7 His-tagged proteins), which is convenient for monitoring of electrophoresis and transfer efficiency. It is suitable as a protein molecular weight standard for SDS-PAGE and Western Blot.

The bands display in Tris-Glycine gel range from 55-320 kDa (~55, ~68, ~90, ~130, ~165, ~210, ~270, ~320 kDa), With orange-red band at 90 kDa, and blue bands at the others. As mentioned, there're 7 His-tagged proteins (55, 68, 130, 165, 210, 270 and 320kDa) in the marker, which will show up on the membrane after anti-His antibody and ECL, add the benefit of using this marker.

### Usage

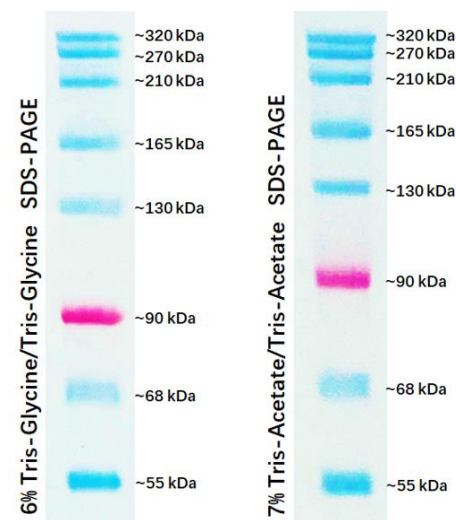
1. The marker is supplied in gel loading buffer and is ready to use. Thaw at room temperature and mix gently and thoroughly.
2. 5 µl per loading for clear visualization during electrophoresis on 15-well or 10-well mini-gel, respectively. It is suggested that qualified laboratories can determine the appropriate volume by their own experimental conditions when using this product for the first time.

### Shipping and Storage Conditions

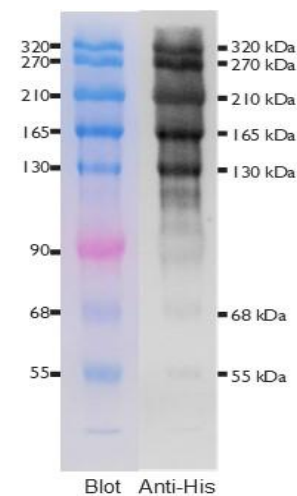
Ship with wet ice; Store at -20°C, valid for 12 months.

### Note

1. Do not boil the protein marker, which can lead to degradation or decolorization of protein bands
2. Extend the transfer time or increase the transfer voltage for Western blot of large molecular weight proteins
3. For your safety and health, please wear safety glasses, gloves, or protective clothing.



Note. The apparent molecular weight of each protein (kDa) has been determined by calibration against an unstained protein ladder in each electrophoresis condition.



All products are for research use only. Caution: Not intended for human or animal diagnostic or therapeutic uses.



**Bioland Scientific LLC** Tel: (562)602-8882 Fax: (562)733-6008

Email: [service@bioland-sci.com](mailto:service@bioland-sci.com) Online: [www.bioland-sci.com](http://www.bioland-sci.com)