

Bi-Color Prestained Protein Marker III (8-200 kDa)

Cat. No.	Product Description	Size
PM13-01	Bi-Color Prestained Protein Marker III (8-200 kDa)	500 μ l
PM13-02	Bi-Color Prestained Protein Marker III (8-200 kDa)	5x500 μ l

Description

The Bi-color Prestained Protein Marker III is a prestained mixture of ten high-purity recombinant proteins (4 His-tagged proteins). The bands display on Tris-Glycine gel ranging from 8-200 kDa (~8, ~13, ~20, ~30, ~40, ~55, ~68, 90, ~110, ~140, ~200 kDa), with orange-red bands of 90 kDa, 30 kDa and rose-red band of 10kDa, blue bands of the others. It is convenient to monitor the electrophoresis and transfer efficiency. The marker is suitable as a protein molecular weight standard for SDS-PAGE and Western Blot.

As mentioned, there're 4 His-tagged proteins (40, 110, 140 and 200kDa) in the marker, which will show up on the membrane after anti-His antibody and ECL, add the benefit of using this marker.

Usage

1. The marker is supplied in gel loading buffer and is ready to use. Thaw at room temperature and mix gently and thoroughly.
2. 5 μ l per loading for clear visualization during electrophoresis on 15-well or 10-well mini-gel, respectively. It is suggested that qualified laboratories can determine the appropriate volume by their own experimental conditions when using this product for the first time.
3. 3 μ l per well for general Western transferring. Apply more for thicker (> 1.5 mm) or larger gel.

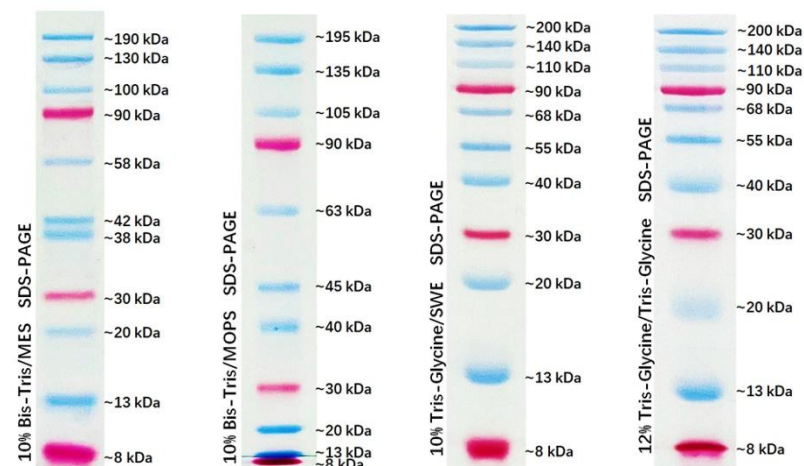
Shipping and Storage Conditions

Ship with wet ice; Store at -20°C, valid for 12 months.

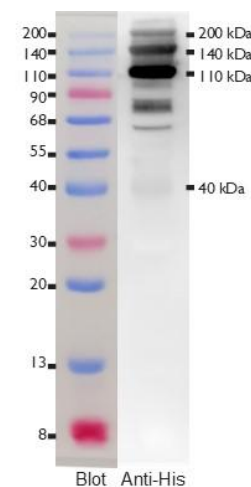
Note

1. Do not boil the protein marker, which can lead to degradation or decolorization of protein bands
2. Extend the transfer time or increase the transfer voltage for Western blot of large molecular weight proteins

3. For your safety and health, please wear safety glasses, gloves, or protective clothing.



Note. The apparent molecular weight of each protein (kDa) has been determined by calibration against an unstained protein ladder in each electrophoresis condition.



All products are for research use only. Caution: Not intended for human or animal diagnostic or therapeutic uses.



Bioland Scientific LLC Tel: (562)602-8882 Fax: (562)733-6008

Email: service@bioland-sci.com Online: www.bioland-sci.com