

# Bi-Color Prestained Protein Marker I (8-195 kDa)

Cat. No.	Product Description	Size
PM11-01	Bi-Color Prestained Protein Marker I (8-195 kDa)	500 µl
PM11-02	Bi-Color Prestained Protein Marker I (8-195 kDa)	5x500 µl

## Description

The Bi-color Prestained Protein Marker I is a prestained mixture of ten high-purity recombinant proteins (no His-tag). The bands display on Tris-Glycine gel ranging from 8-195 kDa (~8, ~13, ~20, ~28, ~40, ~55, ~70, ~105, ~140, ~195 kDa), of which 70 kDa and 8 kDa are rose-red bands, others are blue bands, which is convenient for monitoring of electrophoresis and transfer efficiency. It is suitable as a protein molecular weight standard for SDS-PAGE and Western Blot.

## Usage

- The marker is supplied in gel loading buffer and is ready to use.
- 3 µl or 5 µl per loading for clear visualization during electrophoresis on 15-well or 10-well mini-gel, respectively.
- 1.5~2.5 µl per well for general Western transferring.
- Apply more for thicker (> 1.5 mm) or larger gel.

## Shipping and Storage Conditions

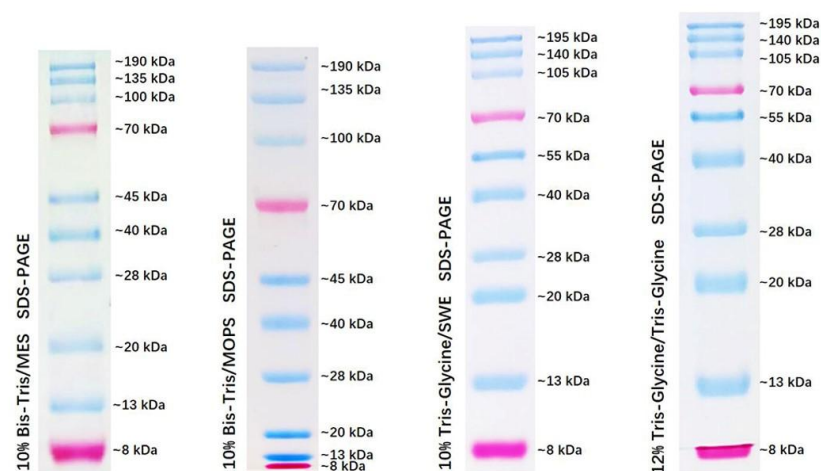
Ship with wet ice; Store at -20°C, valid for 12 months.

## Instructions for Use

1. This product is ready to use with no heating, diluting or addition of reducing agent necessary. Thaw at room temperature and mix gently and thoroughly.
2. Take 3-10 µl protein markers for protein electrophoresis; It is suggested that qualified laboratories can determine the appropriate sample volume by their own experimental conditions when using this product for the first time.
3. Prestained Protein Marker I should be stored at -20°C immediately after use.

## Note

1. Do not boil the protein marker, which can lead to degradation or decolorization of protein bands
2. Extend the transfer time or increase the transfer voltage for Western blot of large molecular weight proteins
3. The molecular weight of the reference prestained protein in the figure is calibrated from the molecular weight of the non-prestained protein.
4. For your safety and health, please wear safety glasses, gloves, or protective clothing.



Note. The apparent molecular weight of each protein (kDa) has been determined by calibration against an unstained protein ladder in each electrophoresis condition.

All products are for research use only. Caution: Not intended for human or animal diagnostic or therapeutic uses.



**Bioland Scientific LLC** Tel: (562)602-8882 Fax: (562)733-6008

Email: [service@bioland-sci.com](mailto:service@bioland-sci.com) Online: [www.bioland-sci.com](http://www.bioland-sci.com)