

1kb Plus Fluorescent DNA Marker for Blue LED (Ready-to-Use)

Catalog No.	Description	Size
DM13-01	13 bands, range from 250bp to 10 kb, ready-to-use	1 x 500 µl
DM13-02	13 bands, range from 250bp to 10 kb, ready-to-use	5 x 500 µl

Description:

The 1kb Plus DNA Ladder is a ready-to-use DNA ladder, which is pre-mixed with loading dye for direct loading on gel. The DNA ladder is composed of 13 individual DNA fragments: 10k, 8k, 6k, 5k, 4k, 3k, 2.5k, 2k, 1.5k, 1k, 750, 500, and 250 bp derived from a mixture of PCR products and specifically digested plasmid DNA. This product contains two enhanced bands (3 kb and 1 kb) for easy referencing. In addition, two tracking dyes, Xylene cyanol FF and Bromophenol blue which mimic the migration of 4,000 bp and 500 bp dsDNA during electrophoresis are also added for real time monitoring.

Source:

Phenol extracted PCR products and dsDNA digested with specific restriction enzymes, equilibrated in 10 mM Tris-HCl (pH 8.0) and 10 mM EDTA.

Effective Size Range: 250bp - 10,000 bp

Concentration: 50 µg/500ul

Recommended Load: 5 µl

Storage:

- Protected from light
- Room temperature ≥ 6 months
- 4°C ≥ 12 months
- -20°C ≥ 36 months

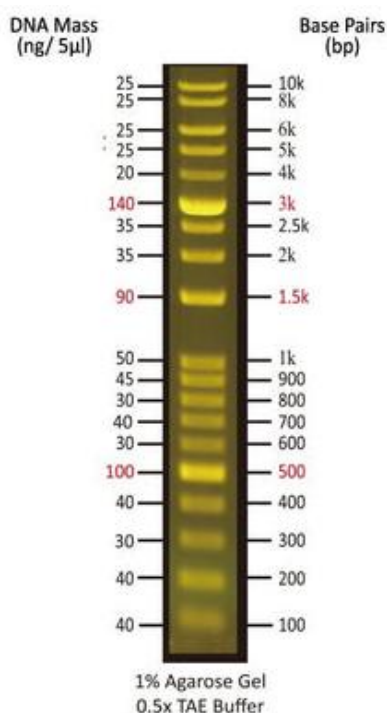


Figure: 1kb Plus DNA Ladder visualized by Blue LED on a 1.5% agarose gel with 0.5 TAE buffer. Mass values are for 5 µl/lane.

 **Bioland Scientific LLC**, 14925 Paramount Blvd., Suite C, Paramount, CA 90723

Tel: (562)602-8882 Fax: (562)733-6008 Email: service@bioland-sci.com Online: www.bioland-sci.com